



DOUGH ROLLER FOR BREAD

Model
MMA-350



Pic - 01

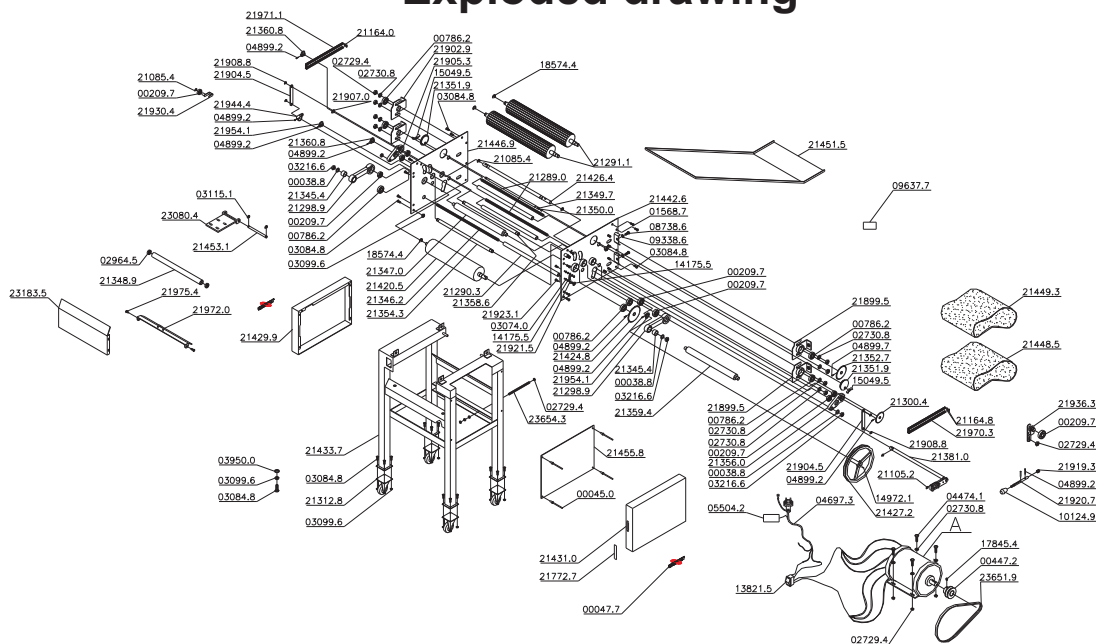
Technical Data



Characteristics	UM	MMA-350
Voltage	[V]	110/220
Frequency	[Hz]	50 ou 60(*)
Power Rating	[CV]	0,5
Consumption	[kW/h]	0,4
Height	[mm]	1400
Width	[mm]	520
Depth	[mm]	900
Net Weight	[kg]	89
Gross Weight	[kg]	114
Nominal Width	[mm]	350

CODIGO	DESCRICAO DO COMPONENTE	UM	CODIGO	DESCRICAO DO COMPONENTE	UM		
1	00038-8	ARR L 1/2" ZB	CE	50	21356-0	MANCAL DO ROLO LA SUPERIOR	PC
2	00045-0	REBITE PRESSAO AD-423.S	NI	51	21358-6	ROLETE SU MOVIDO FELTRO	PC
3	00047-7	LOGOTIPO SKYMSEN PG.ADES.	DE	52	21359-4	ROLO LAMINADOR SUPERIOR	PC
4	00209-7	ROLAMENTO 6202	PC	53	21360-8	CS ENGRENAGEM 1/2" Z-12	PC
5	00447-2	POLIA MOTORA 6x36xM56	PC	54	21381-0	CS EIXO DE REGULAGEM	PC
6	00784-2	ROLAMENTO 6203	PC	55	21420-6	CS ROLO LAMINADOR INFER.	PC
7	01568-7	PS M6x20 DIN 963 ZB	CE	56	21424-8	CS ENGRENAGEM 1/2" Z-34	PC
8	02729-4	PCA M8 DIN 934 ZB	CE	57	21426-4	EIXO DE COMANDO	PC
9	02730-8	ARR L.A.4 DIN 125 ZB	CE	58	21427-2	ROLIA MOVIDA DIAM. 250mm	PC
10	02964-5	ROLAMENTO 608 ZZ	PC	59	21429-9	CS TAMP.A LATERAL ESQUERDA	PC
11	03074-0	ARR L.A.4,3 DIN 125 ZB	CE	60	21431-0	CS TAMP.A LATERAL DIREITA	PC
12	03084-8	PS M6x12 DIN 933 ZB	CE	61	21433-7	CS CAVALIETE DA MODELADORA	PC
13	03099-6	PCA M6 DIN 934 ZB	CE	62	21442-6	CS CHAPA LATERAL DIREITA	PC
14	03115-1	ANEL 10x1 DIN 471	CE	63	21446-9	CS CHAPA LATERAL ESQUERDA	PC
15	03216-6	PCA SEX UNIC 1/2" ZB	CE	64	21448-5	PANO INFERIOR 0,31x0,36	PC
16	03927-6	MOTOR 0,5CV 60HZ	PC	65	21449-3	PANO SUPERIOR 0,28x0,36	PC
17	03950-0	ARR L.A.6,4 DIN 125 ZB	CE	66	21451-5	CS CALHA	PC
18	04474-1	PS M8x20 DIN 933 ZB	CE	67	21453-1	PINO ARTICULACAO MOTOR	PC
19	04697-3	CS 3x1,0mm2/PC90 2PR1 FIF	PC	68	21455-8	CHAPA PROTECAO MOTOR	PC
20	04899-2	PINO ELAST 4x20 DIN 1481	CE	69	21772-7	ETIQ.INDICADORA ESPRESSURA	PC
21	05004-2	ETIQ.ATENCAO 110/220/380V	CE	70	21899-5	CS CHAPA MANCAL ESTIC. D	PC
22	08738-6	PS M10x30 DIN 933 ZB	CE	71	21902-9	CS CHAPA MANCAL ESTIC. E	PC
23	09338-6	ARR L.A10,5 DIN 125 ZB	CE	72	21904-5	HASTE REGUL. ESPRESSURA	PC
24	09637-7	ETIQ. IDENTIF.MOTOR/RESIST	PC	73	21905-3	MANCAL E ROLO LA SUPERIOR	PC
25	10124-9	MANIPULO DA TAMPA C/RI.M8	PC	74	21907-0	PINO DE ARTICULACAO MRL	PC
26	13821-5	CHAVE TECL.30223 M2FT2E3Q	PC	75	21908-8	ANEL 8x0,8 DIN 471 FOSF.	PC
27	14175-5	PCA M4 DIN 934 ZB	CE	76	21919-3	MOIA DIAM. 1,2x1,25	PC
28	14972-1	PCA B0R8.M6 DIN 315 INOX	CE	77	21920-7	PINO INDICADOR	PC
29	15049-5	PCA B0R8.M6 DIN 315 INOX	CE	78	21921-5	CHAPA DE REGULAGEM	PC
30	17845-4	PS M6x12 DIN 916 FOSF	CE	79	21923-1	PS M4x1,6 DIN 963 ZB	PC
31	18574-4	ANEL 17x1 DIN 471 FOSF.	CE	80	21930-4	CS CHAPA RASPADORA	PC
32	21085-4	ANEL 15x1 DIN 471	CE	81	21936-3	CS ESTICADOR INFERIOR	PC
33	21105-2	ANEL ELAST. 15 DIN 6799	CE	82	21944-4	CS ALAVANCA ME EIXO REGUL.	PC
34	21164-8	ENIENDA P/CORRENTE 1/2"	PC	83	21954-1	CS ENGR. 1/2"x13 DENTES	PC
35	21289-0	HASTE 1/2"UNCx400mm ZB	PC	84	21970-3	CORRENTE 1397mm(110 ELOS)	PC
36	21290-3	TUBO 350mm	PC	85	21971-1	CORRENTE 508mm (40 ELOS)	PC
37	21291-1	ROLETE IR DO FUSTO C/REV	PC	86	21972-0	CS CHAPA RASPADORA	PC
38	21295-9	BACIM DE ALIESTE	PC	87	21975-4	PARAF.ARTICULACAO RASPAD.	PC
39	21300-4	CS ENGRENAGEM 1/2" Z-22	PC	88	23080-4	BASE DO MOTOR	PC
40	21312-8	RODIZIO GRATORIO	PC	89	23183-5	CHAPA GUIA DA MASSA	PC
41	21345-4	DISTANCIADOR 21	PC	90	23651-9	CORREIA A.47	PC
42	21346-2	HASTE 1/2"x437mm ZB	PC	91	23654-3	HASTE POSCADA M8x150mm ZB	PC
43	21347-0	EIXO ESTICADOR INFERIOR	PC				
44	21348-9	ROLETE DO ESTICADOR SUP	PC				
45	21349-7	EIXO DO ROLETE SUPER. E	PC				
46	21350-0	SEPARADOR	PC				
47	21351-9	CHAPA DE AJUSTAGEM	PC				
48	21352-7	CS ENGRENAGEM 1/2" Z-28	PC				
49	21354-3	ROLETE IN MOVIDO FELTRO	PC				

Exploded drawing



Operation Instructions

You have purchased a dough roller Mod. MMA 350. In order to properly operate it please follow the steps as described below and order to get the best in quality, durability, safety and efficiency:

- 1-Carefully read the technical data table
- 2-Be sure the machine is connected to the correct tensions i.e., if the power of the outlet matches with the energy required by the motor. Always ground the machine.
- 3-NEVER touch the cilinders especially when the machine is in movement, with your fingers. Serious injuries may occur.
- 4-NEVER do any cleaning, lubrication, nor touch the machine when it is in operation. For your own SAFETY, be sure to remove the plug from the outlet.
- 5-When in operation, NEVER touch the machine with wet hands, clothing or shoes. Ignoring these recommendations may cause ELECTRICAL SHOCKS and even a fatal situation may occur.
- 6-IMPORTANT. After using the machine turn it off, take the plug off the outlet. Using a piece of cloth deposit a thin layer of MARGERINE, or FAT without SALT on the cilinders. Such operation will avoid oxidation. NEVER use edible oil.
- 7-In order to obtain a steady width for the dough, pull the button No. 1 (see picture 01) and adjust it to the desired measure as indicated on the instructions sticker and then release it.
- 8-Cleaning
Use a humid piece of cloth and neutral soap for cleaning the machine. Be sure the plug ia off the outlet.

FLEETWOOD ONE YEAR LIMITED WARRANTY

The original registered owner of this Fleetwood product should contact Fleetwood at 800-445-6601 for any warranty problems or service. Fleetwood will repair or replace parts at our option for period of one year it unit fails to perform due to defects in material or workmanship. Freight if required is at owners expense. Warranty does not include misuse or damage due to abuse as determined by Fleetwoods inspection. Units that are 70 lbs., or less are considered carry in and should be taken to an authorized service facility

Please read all safety instructions
SERIAL # _____ MODEL # _____

DETACH AND KEEP TOP PORTION

LIMITED WARRANTY REGISTRATION

OWNERS NAME _____
 BUSINESS _____
 ADDRESS _____
 MODEL # _____ SERIAL # _____
 PURCHASED FROM _____

FILL OUT ABOVE INFORMATION AND MAIL TO FLEETWOOD
 FLEETWOOD FOOD SERVICE
 PO BOX 9160
 NEWARK N.J. 07104